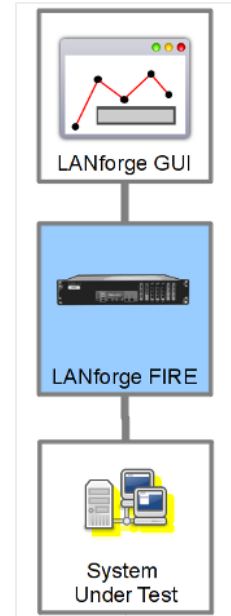
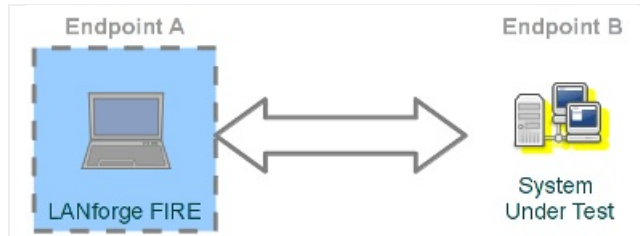
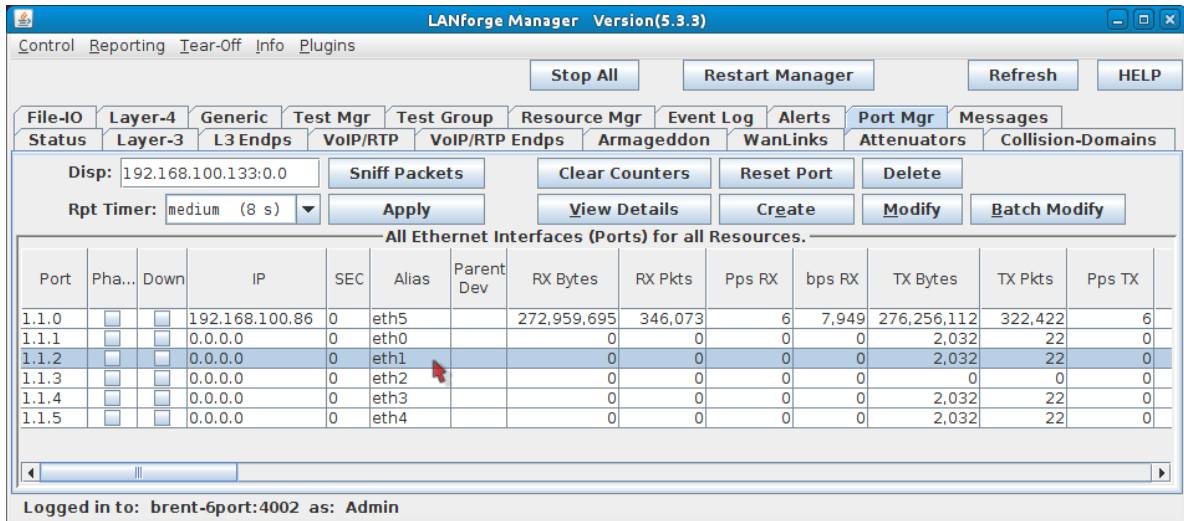


Layer-3 UDP Traffic Generator

Goal: Generate one-sided traffic to a network device with a fixed destination IP address. This scenario is useful for testing switches, firewalls and data loggers that have to handle highly varied or very fast UDP packet streams with a fixed destination. A one-sided traffic stream is used to send packets to a network device under test when round-trip reporting is not required.



1. Configure an ethernet port.
 - A. On the **Port Mgr** tab, select a port within the table and click the **Modify** button.



LANforge Manager Version(5.3.3)

Control Reporting Tear-Off Info Plugins

Stop All Restart Manager Refresh HELP

File-IO Layer-4 Generic Test Mgr Test Group Resource Mgr Event Log Alerts Port Mgr Messages

Status Layer-3 L3 Endps VoIP/RTP VoIP/RTP Endps Armageddon WanLinks Attenuators Collision-Domains

Disp: 192.168.100.133:0.0 Sniff Packets Clear Counters Reset Port Delete

Rpt Timer: medium (8 s) Apply View Details Create Modify Batch Modify

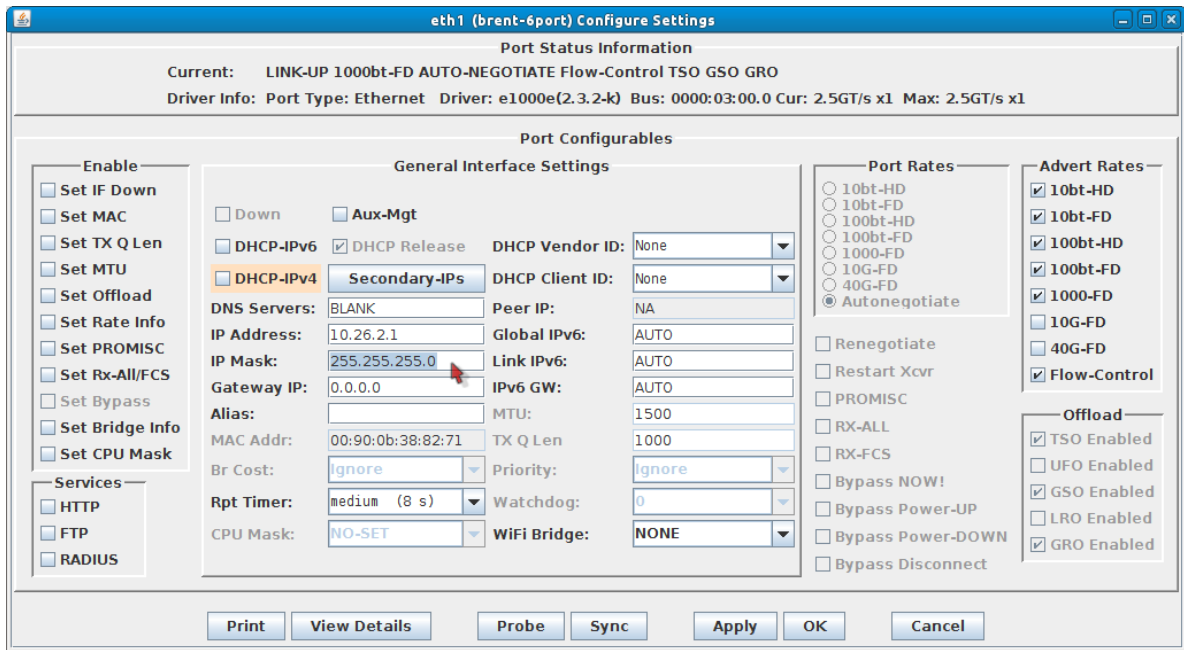
All Ethernet Interfaces (Ports) for all Resources.

Port	Pha...	Down	IP	SEC	Alias	Parent Dev	RX Bytes	RX Pkts	Pps RX	bps RX	TX Bytes	TX Pkts	Pps TX
1.1.0	<input type="checkbox"/>	<input type="checkbox"/>	192.168.100.86	0	eth5		272,959,695	346,073	6	7,949	276,256,112	322,422	6
1.1.1	<input type="checkbox"/>	<input type="checkbox"/>	0.0.0.0	0	eth0		0	0	0	0	2,032	22	0
1.1.2	<input type="checkbox"/>	<input type="checkbox"/>	0.0.0.0	0	eth1		0	0	0	0	2,032	22	0
1.1.3	<input type="checkbox"/>	<input type="checkbox"/>	0.0.0.0	0	eth2		0	0	0	0	0	0	0
1.1.4	<input type="checkbox"/>	<input type="checkbox"/>	0.0.0.0	0	eth3		0	0	0	0	2,032	22	0
1.1.5	<input type="checkbox"/>	<input type="checkbox"/>	0.0.0.0	0	eth4		0	0	0	0	2,032	22	0

Logged in to: brent-6port:4002 as: Admin

- A. This example will use port eth1.

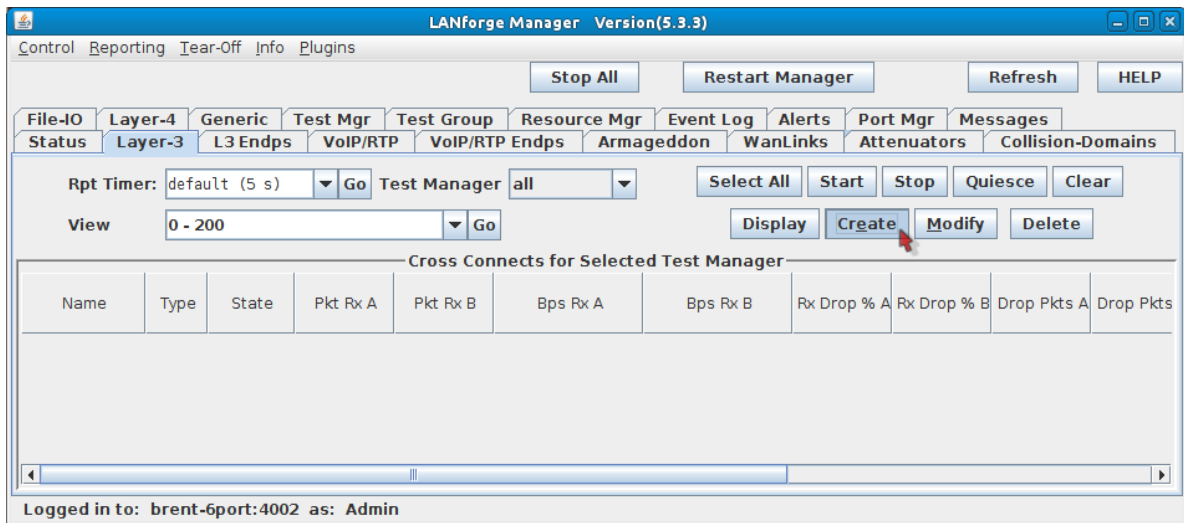
B. Assign an IP and Mask as necessary.



C. Click **OK**.

2. Configure the Layer-3 connection.

A. On the **Layer-3** tab, click **Create**.



B. Assign port `eth1` to **Endpoint-A**.

udpqen - Create/Modify Cross Connect

+ - All Display Sync Batch-Create Apply OK Cancel

1 Cross-Connect

CX Name: udpqen

CX Type: LANforge / UDP

	Endpoint A	Endpoint B
Resource:	1 (brent-6port)	1 (brent-6port)
Port:	2 (eth1)	5 (eth4)
Min Tx Rate:	New Modem (56 Kbps)	New Modem (56 Kbps)
Max Tx Rate:	Same	Same
Min PDU Size:	AUTO	AUTO
Max PDU Size:	Same	Same
IP ToS:	Best Effort (0)	Best Effort (0)
Pkts To Send:	Infinite	Infinite

A. You will not need to assign **Endpoint-B** because that will become unmanaged.

C. Configure the attributes in section 1:

udpqen - Create/Modify Cross Connect

+ - All Display Sync Batch-Create Apply OK Cancel

1 Cross-Connect

CX Name: udpqen

CX Type: LANforge / UDP

	Endpoint A	Endpoint B
Resource:	1 (brent-6port)	1 (brent-6port)
Port:	2 (eth1)	5 (eth4)
Min Tx Rate:	1G (1 Gbps)	Zero (0 bps)
Max Tx Rate:	Same	Same
Min PDU Size:	UDP P1d (1,472 B)	AUTO
Max PDU Size:	Same	Same
IP ToS:	Best Effort (0)	Best Effort (0)
Pkts To Send:	Infinite	Infinite

A. Endpoint-A Min Tx Rate: `1Gbps`

B. Endpoint-B Min Tx Rate: `Zero (0 bps)`

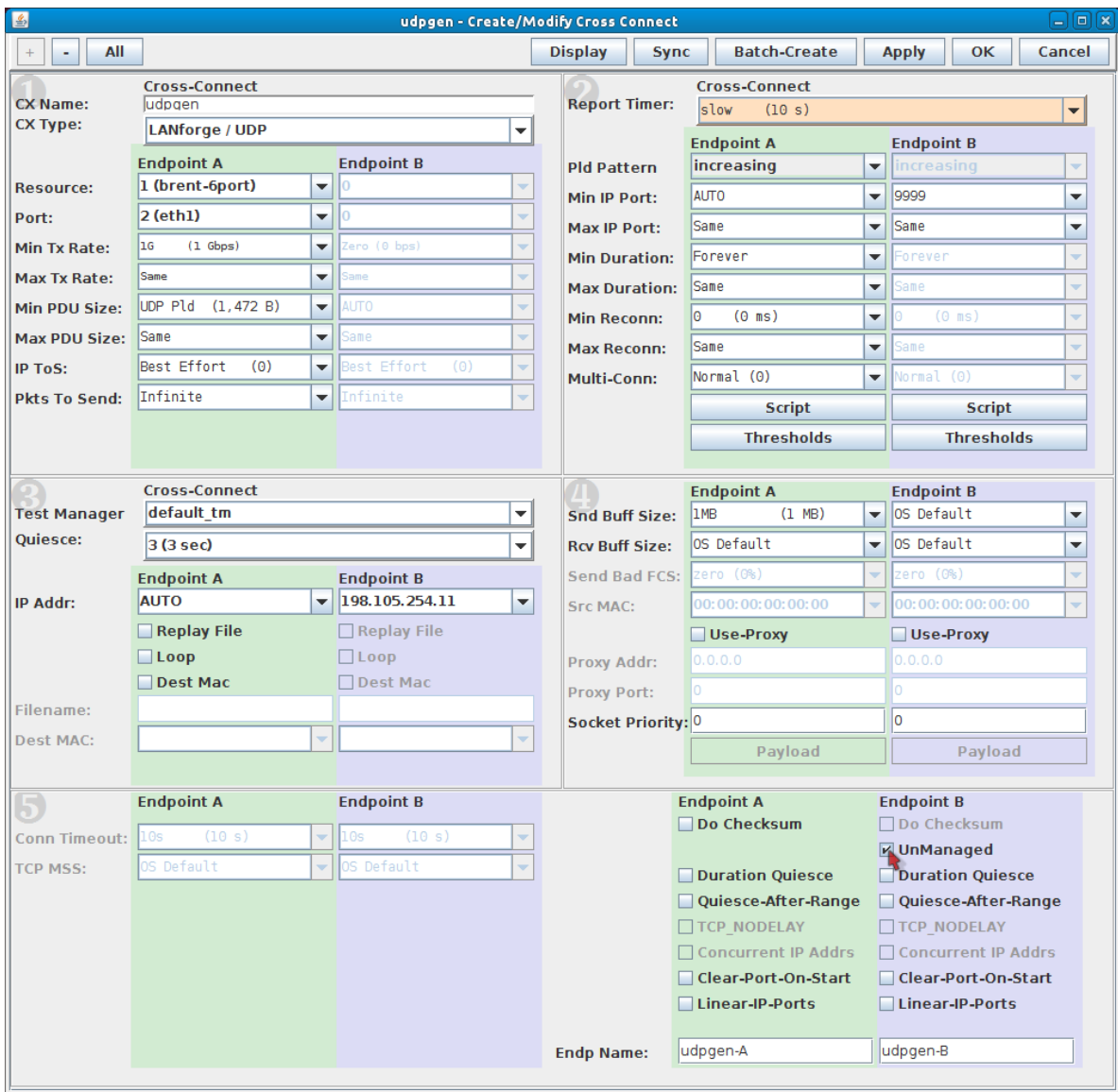
C. Endpoint-A Min PDU Size: `UDP P1d (1,472 B)`

D. Use the **All** button at the top to expand to the last detail level.

The screenshot shows the 'udppgen - Create/Modify Cross Connect' dialog box. At the top, there are buttons for '+', '-', 'All', 'Display', 'Sync', 'Batch-Create', 'Apply', 'OK', and 'Cancel'. A red arrow points to the 'All' button. The dialog is divided into four numbered sections:

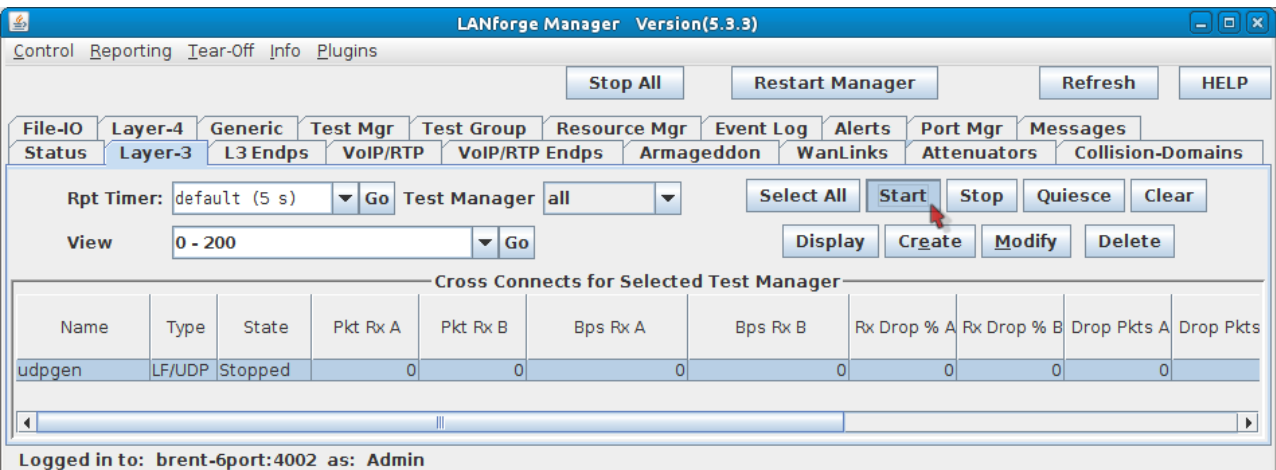
- 1 Cross-Connect**:
 - CX Name: udppgen
 - CX Type: LANforge / UDP
 - Endpoint A: 1 (brent-6port), 2 (eth1), 1G (1 Gbps), Same, UDP Pld (1,472 B), Same, Best Effort (0), Infinite
 - Endpoint B: 1 (brent-6port), 5 (eth4), Zero (0 bps), Same, AUTO, Same, Best Effort (0), Infinite
- 2 Report Timer**:
 - Report Timer: default (5 s)
 - Pld Pattern: increasing
 - Min IP Port: AUTO
 - Max IP Port: Same
 - Min Duration: Forever
 - Max Duration: Same
 - Min Reconn: 0 (0 ms)
 - Max Reconn: Same
 - Multi-Conn: Normal (0)
 - Buttons: Script, Thresholds
- 3 Test Manager**:
 - Test Manager: default_tm
 - Quiesce: 3 (3 sec)
 - Endpoint A: AUTO, Replay File, Loop, Dest Mac
 - Endpoint B: AUTO, Replay File, Loop, Dest Mac
 - Filename: [empty]
 - Dest MAC: [empty]
- 4 Snd Buff Size**:
 - Snd Buff Size: OS Default
 - Rcv Buff Size: OS Default
 - Send Bad FCS: zero (0%)
 - Src MAC: 00:00:00:00:00:00
 - Proxy Addr: 0.0.0.0
 - Proxy Port: 0
 - Socket Priority: 0
 - Buttons: Payload

E. Configure the Layer-3 connection to the *system under test* (Endpoint-B) by following these steps:



- A. In section 5, on the right side, Endpoint-B (blue), select **UnManaged**. This will gray-out most of the Endpoint-B options.
- B. In section 2, set the Report Timer to **slow (10 s)**. Also, set the Endpoint-B Min IP port to **9999**. If you have a *service under test* this port should match, if not, this setting still needs to be present to generate valid traffic.
- C. In section 3, set the Endpoint-B IP to the *system under test* IP address. Our example shows **198.105.254.11**.
- D. In section 4, set the send buffer size (Snd Buff Size) to **1MB**.
- E. Click **OK** at the top to commit the changes.

3. Start generating traffic.



- A. In the **Layer-3** tab, select the connection **udpgen**.

B. Click **Start**.

*Candela Technologies, Inc., 2417 Main Street, Suite 201, Ferndale, WA 98248, USA
www.candelatech.com | sales@candelatech.com | +1.360.380.1618*