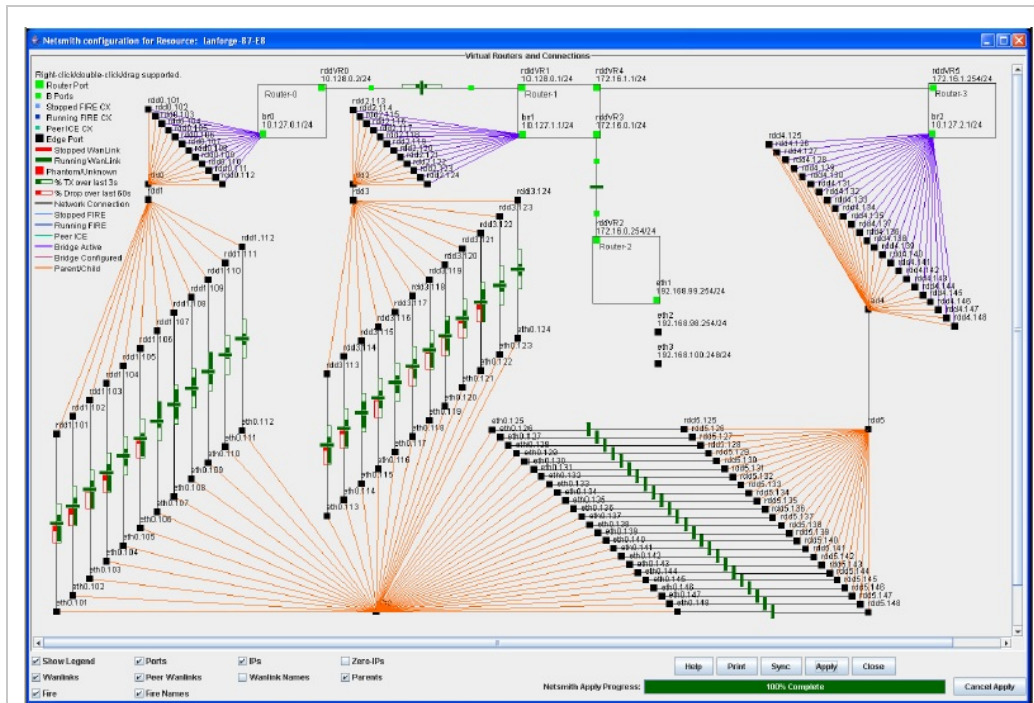


LANforge Screenshots

- [Netsmith & CT970-48](#)
- [LANforge Port Statistics](#)
- [LANforge-FIRE & ICE](#)
- [LANforge-GUI Images](#)
- [LANforge HTML Reports](#)

- For more information about Netsmith and the LANforge CT970-48, see the LANforge [Systems](#) page.



Click Image for Hi-Resolution Version. (Remember to expand image in new tab or browser.)

- For more information about LANforge-FIRE and LANforge-ICE, see the LANforge [Features](#) page.

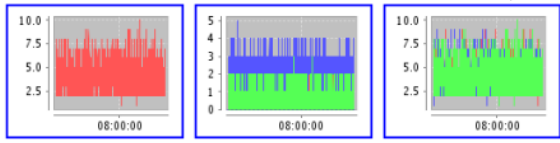
LANforge Report - Microsoft Internet Explorer

File Edit View Favorites Tools Help Back Search Favorites

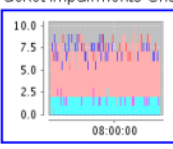
Graph set for WanLink Packet Impairments.

These values are calculated by tracking the number of impaired packets (dropped, duplicated, out-of-order, corruptions) for received packets over a period of time and reporting the average for the period. If there were zero impairments of a particular type for the entire reporting period, the graph will ignore that data type for that graph. A completely empty graph means there were no impairments were inserted.

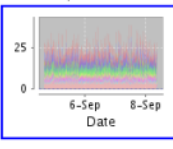
wl-rdd-1-A wl-rdd-1-B wl-rdd-1-A.wp1



Packet Impairments Chart



Packet Impairments Chart



Internet

Click Image to View Sample HTML Report with Detailed Graphs.

- For more information about LANforge-FIRE and LANforge-ICE, see the LANforge [Features](#) page.

Click Image for Hi-Resolution Version. (Remember to expand image in new tab or browser.)

- For more information about LANforge-FIRE and LANforge-ICE, see the LANforge [Features](#) page.

The screenshot displays the LANforge Manager interface with several key sections:

- Port Status Information:** Shows current settings for Port 3 (ezra100@ezra100.cvs1.09-1.9/29/99 Dom) as LINK-UP 100bt-FD AUTO-NEGOTIATE NEGOTIATION-COM. Supported modes include 10bt-HD 10bt-FD 100bt-HD 100bt-FD AUTO-NEGOTIATE.
- Port Configurables:** Includes fields for IP Address (0.0.0.0), IP Mask (0.0.0.0), Default Gateway (0.0.0.0), MAC Address (00:30:f7:03:c5:4a), TX Q Len (400), and MTU (1500).
- WANLink Display - ezra-w3:**
 - Endpoint ezra-w2-A:** WAN Speed: 30000000 bps TX: 29690237, bps RX: 29885285, TX Pkts: 5294558. Rx Bytes Dropped: 0.
 - Endpoint ezra-w3-B:** WAN Speed: 30000000 bps TX: 29867189, bps RX: 29598480, TX Pkts: 5423859. Rx Bytes Dropped: 0.
- WANPaths for WANLink Endpoint: ezra-w3-A:**

Name	Tx Rate	Source-Addr	Dest-Addr	Tx Pkts	Rx Pkts	Tx Bytes	Rx Bytes	Dropped	Dup Pkts
wp-11	512000	192.168.0.0/16	0.0.0.0/0	0	0	0	0	0	0
- WANPaths for WANLink Endpoint: ezra-w3-B:**

Name	Tx Rate	Source-Addr	Dest-Addr	Tx Pkts	Rx Pkts	Tx Bytes	Rx Bytes	Dropped	Dup Pkts
wp-11	56000	192.168.0.0/16	0.0.0.0/0	0	0	0	0	0	0
- Endpoint Statistics (ezra-w3-A):** Min TX: 70000000, Max TX: 70000000, RX Rate: 4447569, RX Pkts: 197758, TX Pkts: 187770, Pps RX: 2765, Errors: 315.
- Latency Distribution:** Shows a distribution for received packets for the last 5 minutes, with a peak around 2-20ms.

Click Image for Hi-Resolution Version. (Remember to expand image in new tab or browser.)

Candela Technologies, Inc., 2417 Main Street, Suite 201, Ferndale, WA 98248, USA
www.candelatech.com | sales@candelatech.com | +1.360.380.1618