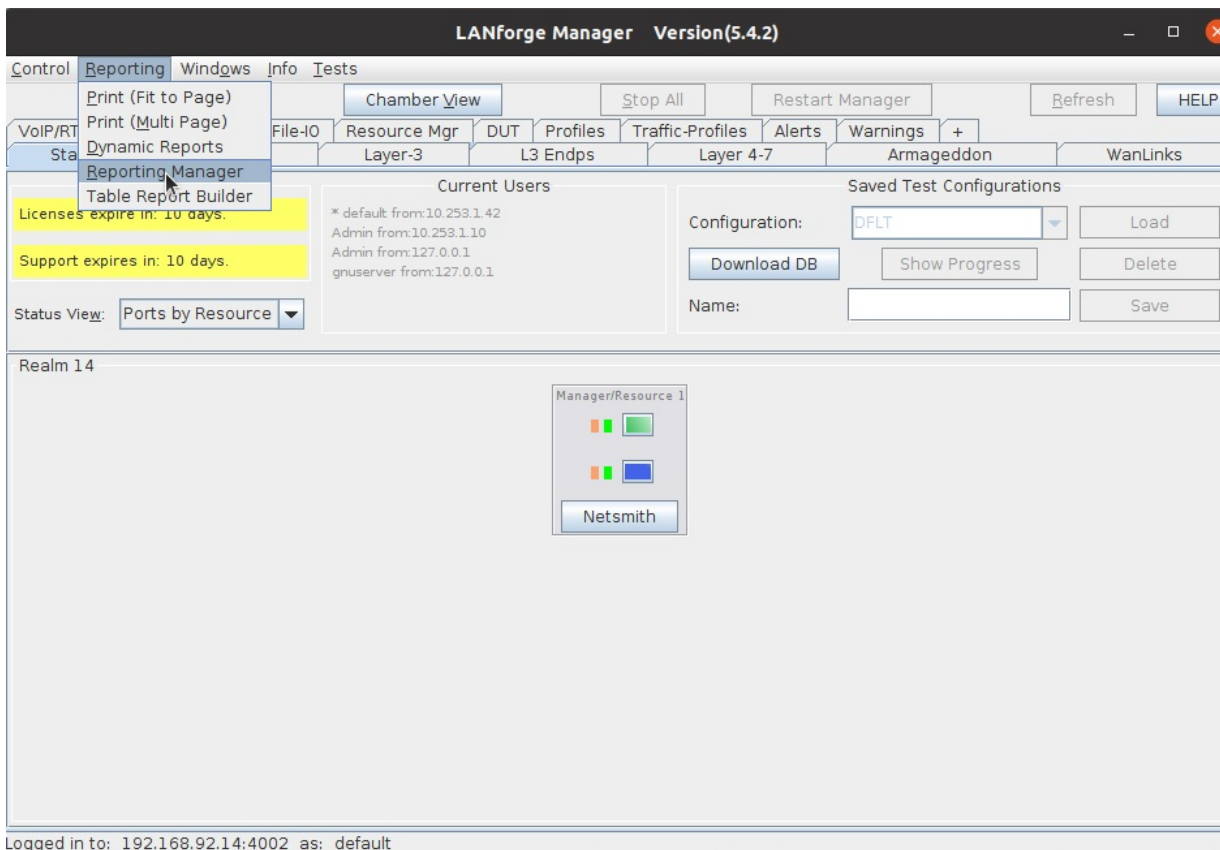


Changing the logo generated in GUI reports

Goal: Correctly access and change the logo displayed at the top of GUI-generated reports in your local Lanforge GUI.

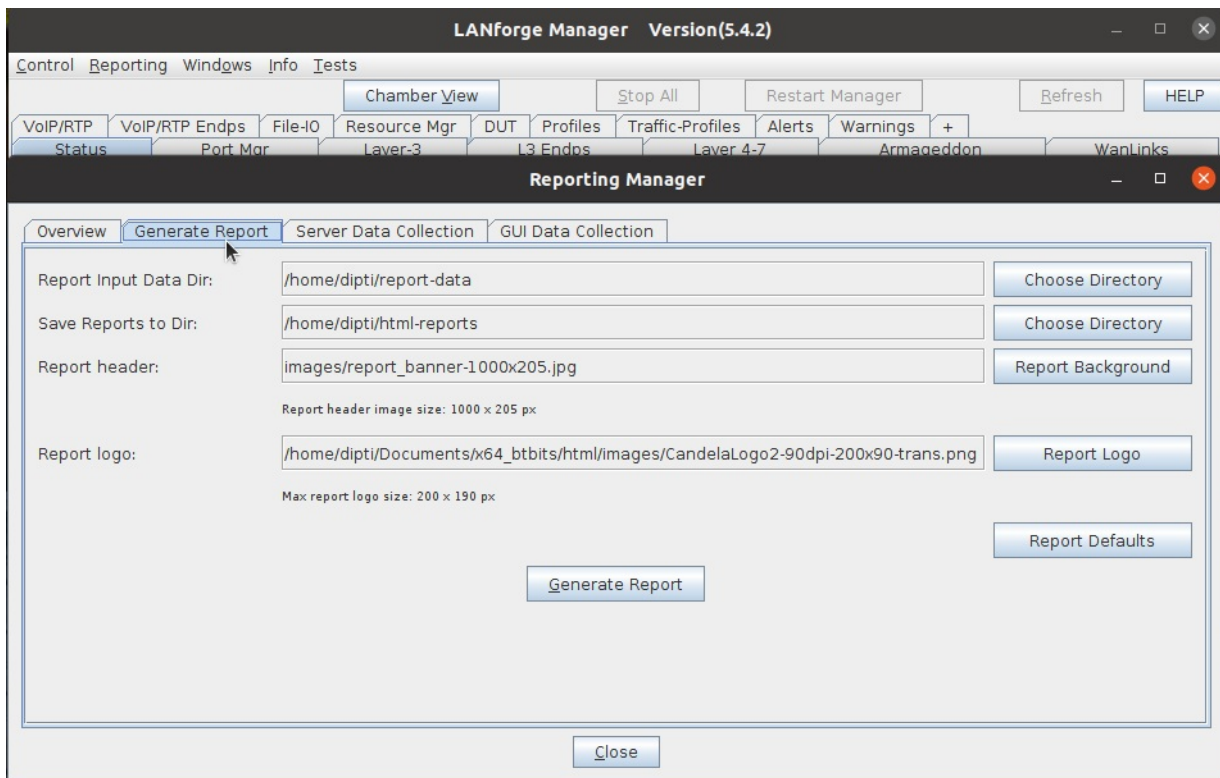


1. Open your LANforge GUI, click on Reporting, and Reporting Manager



The screenshot shows the LANforge Manager Version(5.4.2) GUI. The 'Reporting' menu is open, and 'Reporting Manager' is selected. The interface includes a top navigation bar with 'Control', 'Reporting', 'Windows', 'Info', and 'Tests'. Below this is a 'Chamber View' section with various tabs like 'File-I/O', 'Resource Mgr', 'DUT', 'Profiles', 'Traffic-Profiles', 'Alerts', 'Warnings', and '+'. The main content area is divided into 'Current Users' and 'Saved Test Configurations'. The 'Current Users' section lists users like 'default', 'Admin', and 'gnuserver'. The 'Saved Test Configurations' section has a 'Configuration' dropdown set to 'DFLT' and buttons for 'Load', 'Download DB', 'Show Progress', 'Delete', and 'Save'. At the bottom, there is a 'Realm 14' section with a 'Manager/Resource 1' box containing a 'Netsmith' button. The status bar at the bottom indicates 'Logged in to: 192.168.92.14:4002 as: default'.

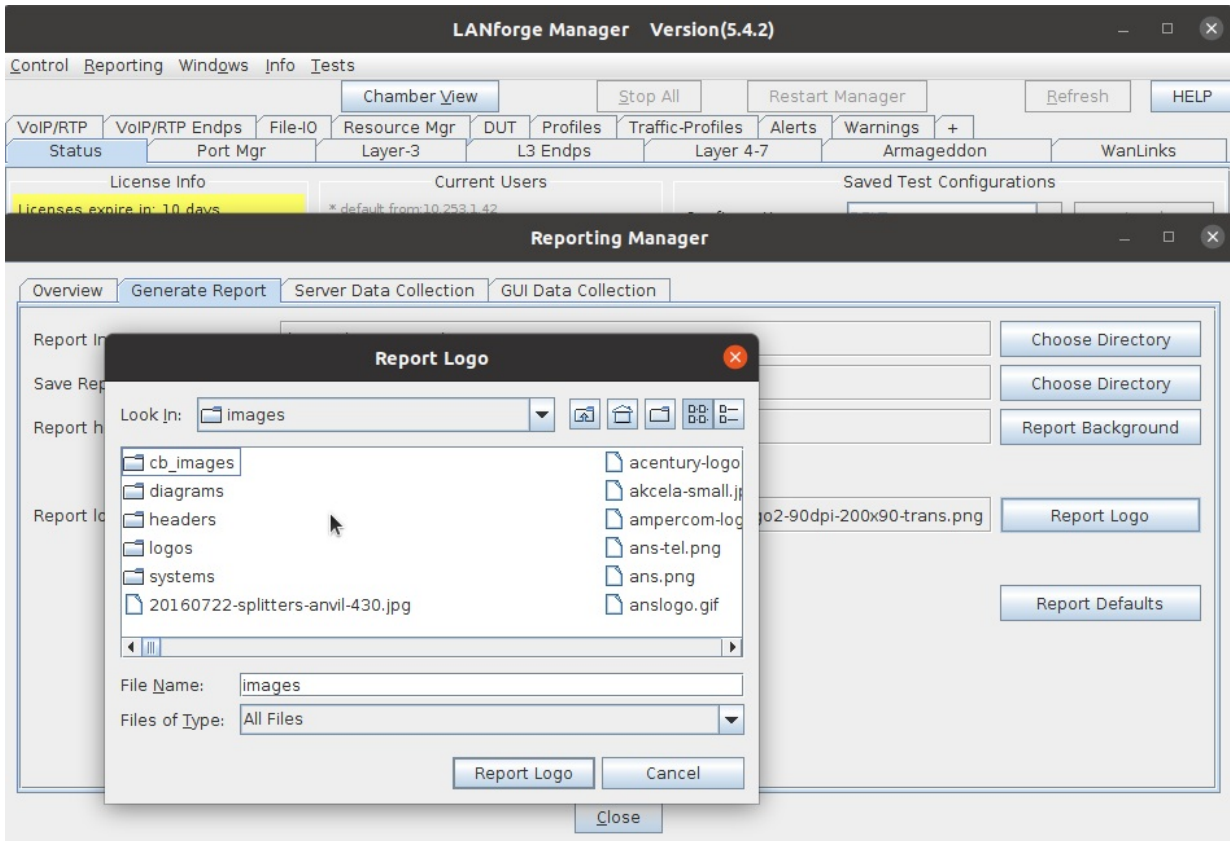
2. Click on Generate Report



3. Find a desired image instead of the default report logo that fits the report logo size (within 200 x 90 px size range) and save the image into the html/images/ path within the bt_bits directory.



4. Once the desired image is within the appropriate images folder, scroll over back to the **Reporting Manager** tab, click on **Report Logo** and select the image (and image path) to be placed in the Report logo path. Then select **Report Logo**. Now, once a user generates a report, the new report should print out with a different logo at the top.



Candela Technologies, Inc., 2417 Main Street, Suite 201, Ferndale, WA 98248, USA
www.candelatech.com | sales@candelatech.com | +1.360.380.1618