

Connecting with PuTTY

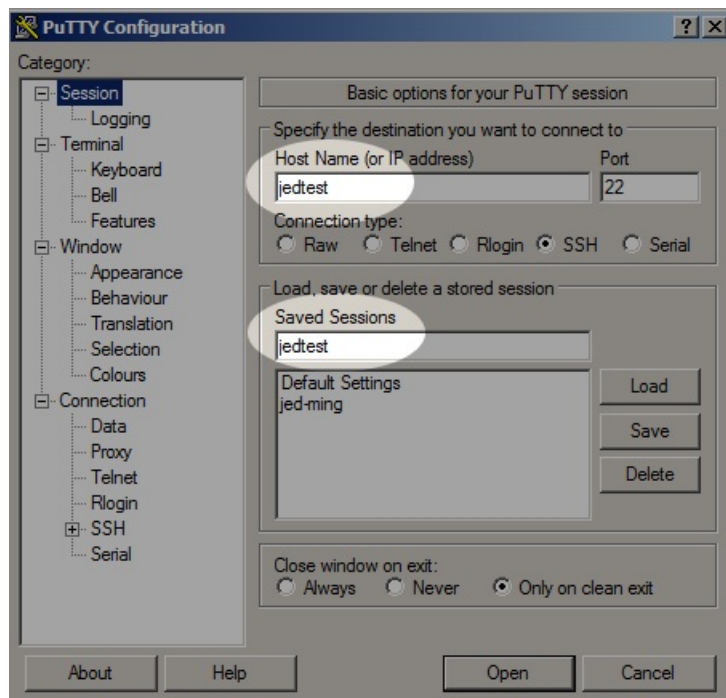
Goal: Using PuTTY on Windows to connect to LANforge Linux servers.

Lots of tasks, like scripting, can be done over SSH from your Windows desktop. Here are a few steps to help you customize your PuTTY terminal to work faster.

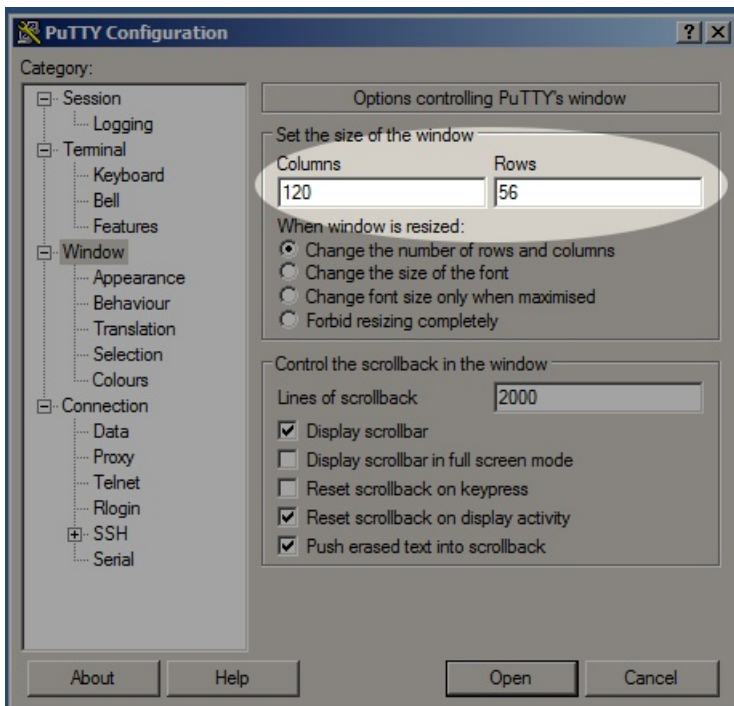


1. Configuring a PuTTY Session

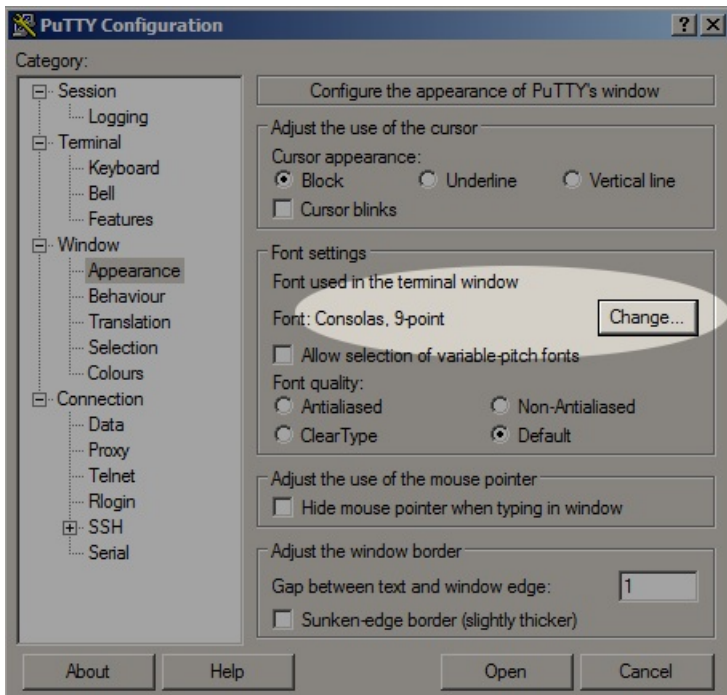
- A. When you double click on the PuTTY icon and it launches, you can start customizing your session preferences. We'll name this session *jedtest*



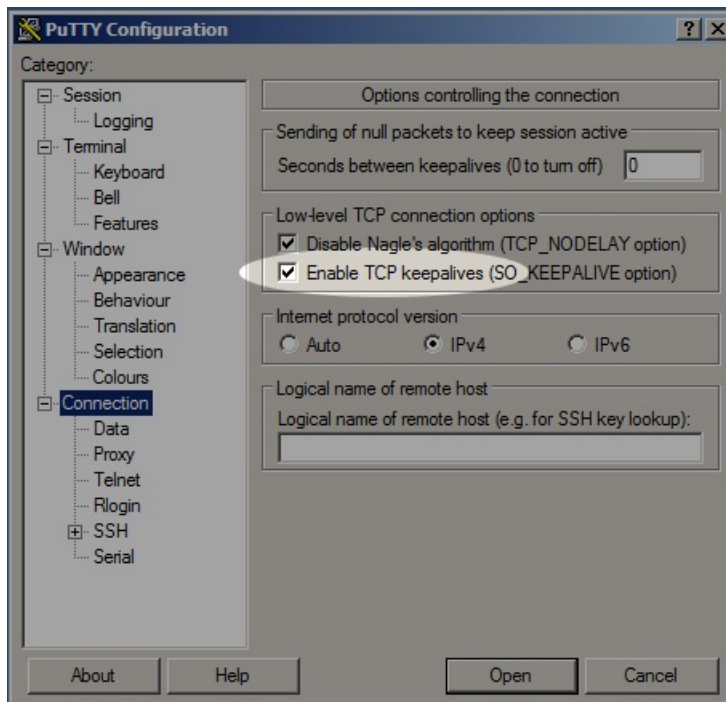
B. Let's default the window to something large, like 120 columns and 56 rows.



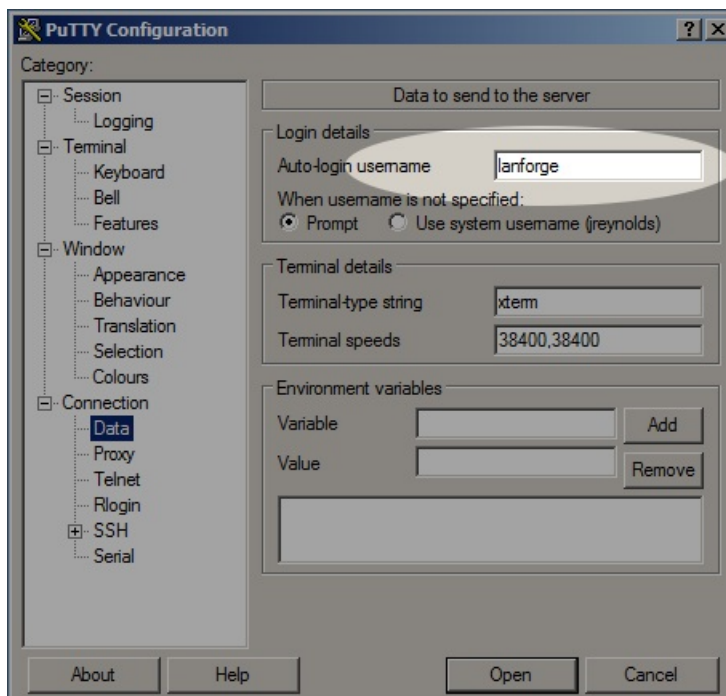
C. The *Fixed* font can be replaced with the *Consolas* font.



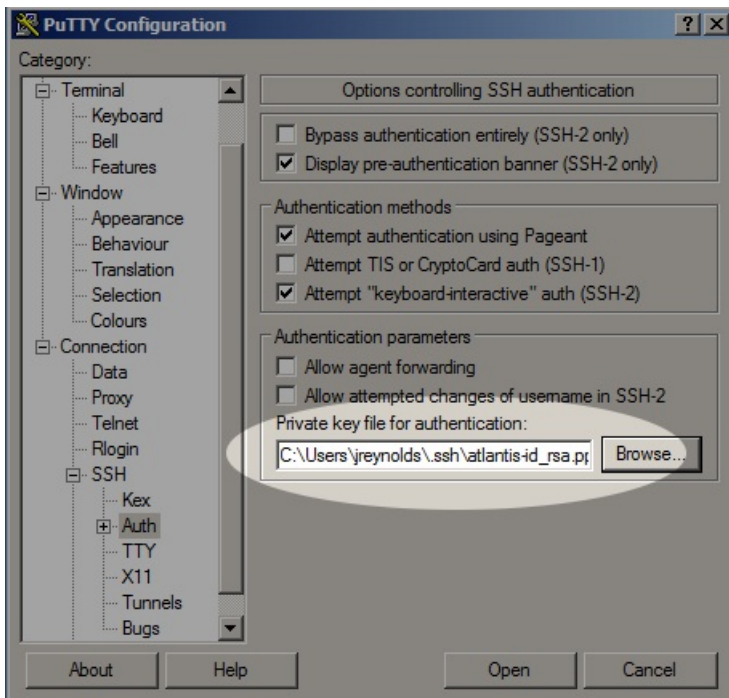
D. Let's turn on *TCP Keep-alive* and set *IPv4* as the default networking protocol.



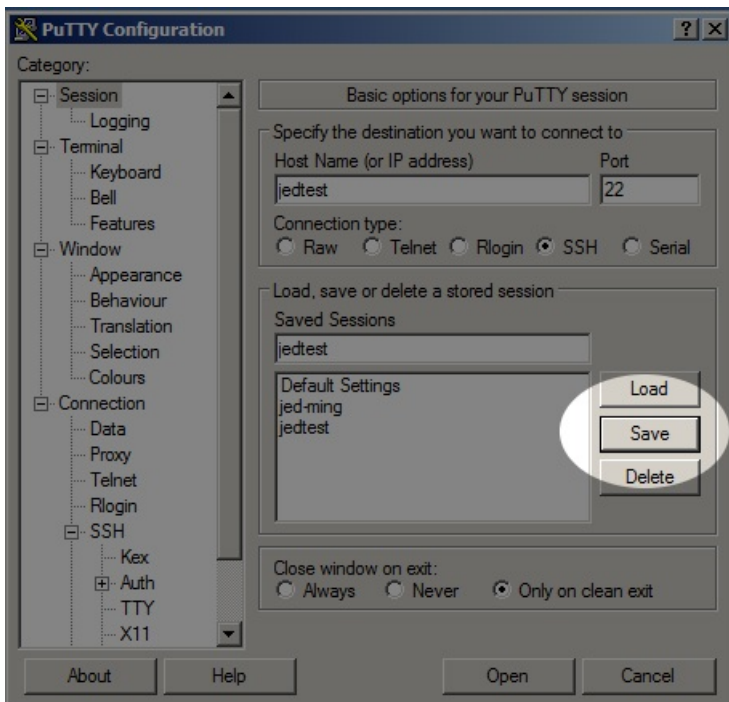
E. We login to LANforge resources with user `lanforge`



F. Generating a SSH keypair is not difficult. Let's enter the path to our public key file.



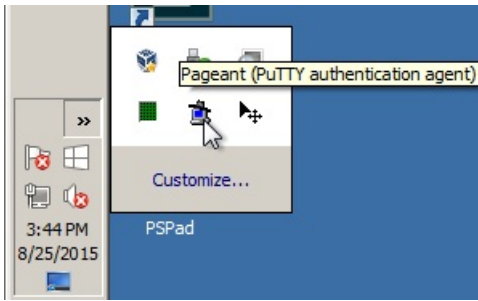
G. We have done our PuTTY config. Now back to the top **Session** screen, and click **Save**



2. Configure Pagent with your public key

- A. Create your own public ssh key. For more information see [WinScp Net](#)
- B. Start Pagent. Configure it to load on startup.

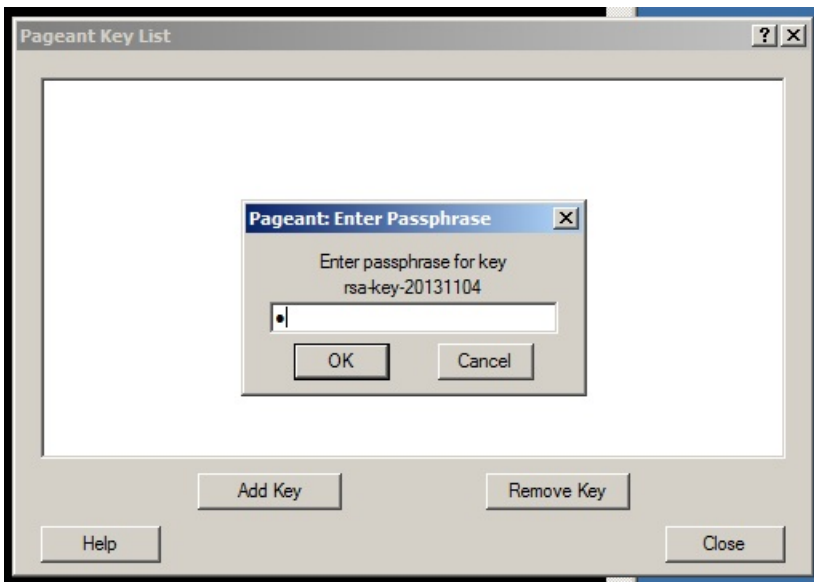
C. In the System Tray you will see the Pageant icon.



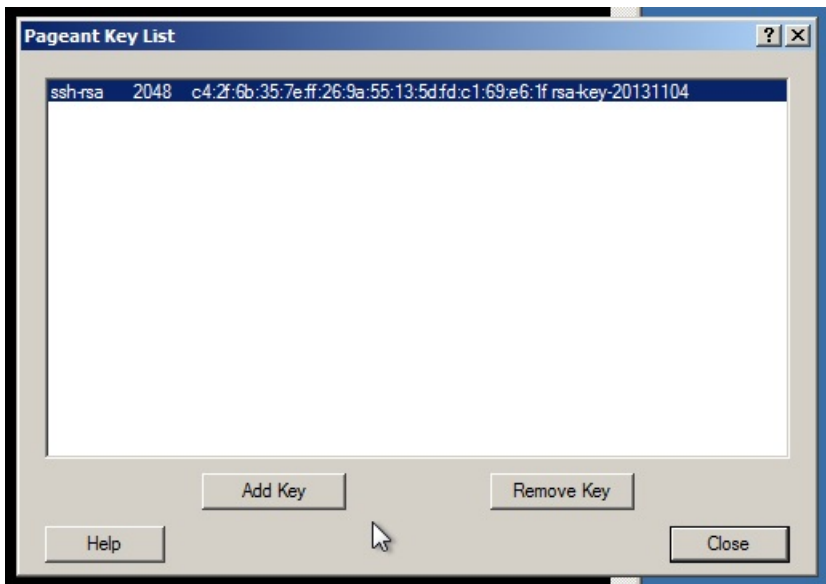
D. **Right-click** the Pageant icon and click **Add Key** to select your key



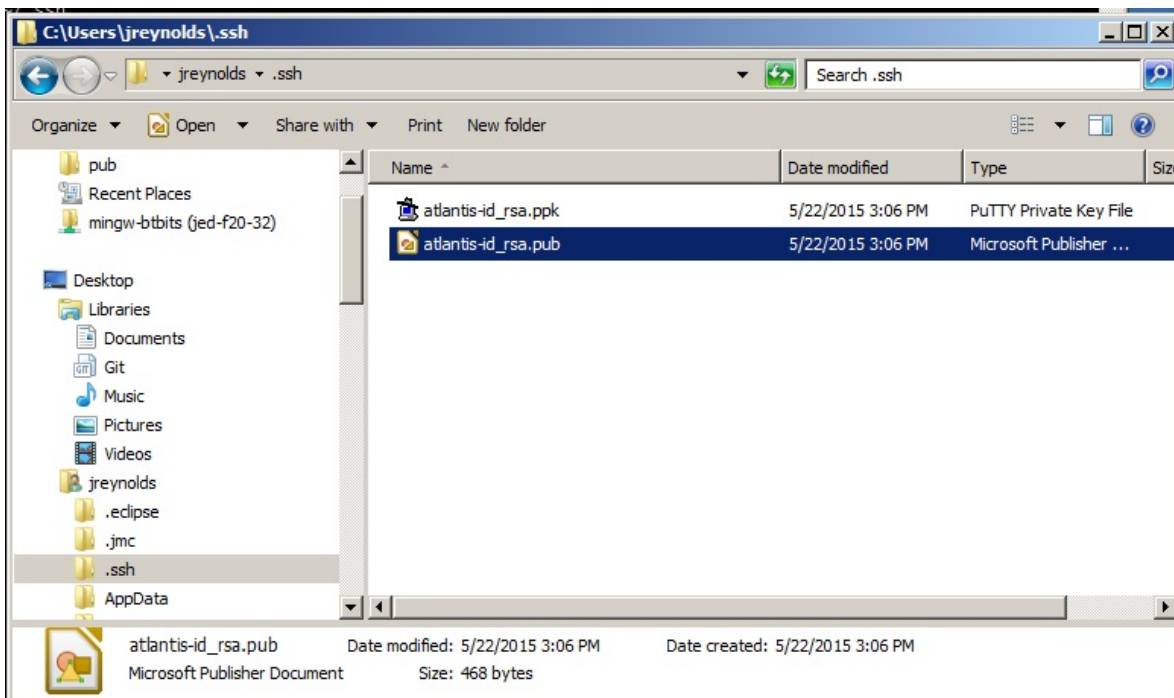
E. You will need to provide your pass-phrase to load your key



F. We see a loaded key

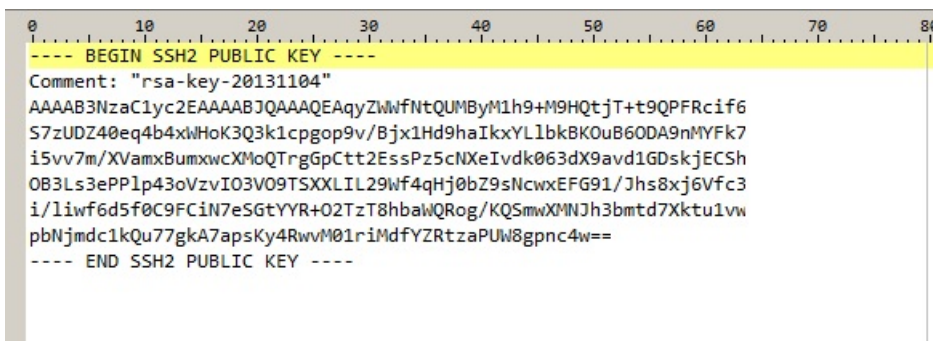


G. Here is our key, we will view the .pub file to copy out the public key.

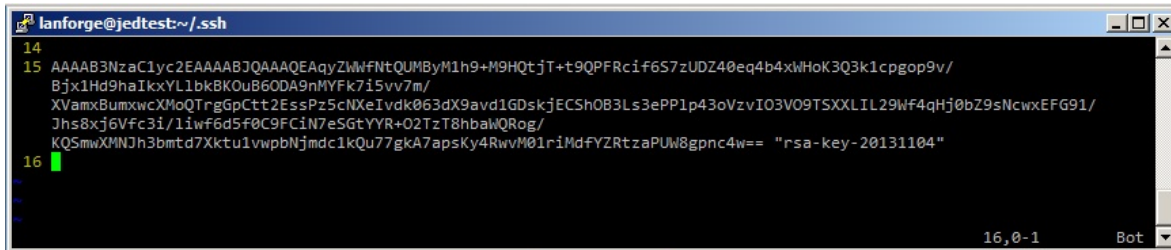


H. In a putty window you will log into your LANforge server and edit
`/home/lanforge/.ssh/authorized_keys`

I. Copy the text and place the "Comment" section at the end when you paste it into your ssh



J. Here is the public key string, with newlines and spaces removed. The *Comment* text goes at the end.

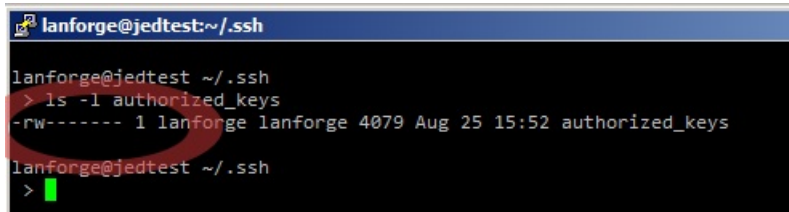


```
lanforge@jedtest:~/ssh
14
15 AAAAA3NzaC1yc2EAAAABJQAAAQEAqyZlWfNtQUMByM1h9+M9HQjtT+t9QPFrci f6S7zUDZ40eq4b4xlHoK3Q3k1cpgop9v/
  Bjx1Hd9haIkxYL1bkBKOU860DA9nMYFk715v7m/
  XVamxBumxwXMoQTrgGpCtt2EssPz5cNXeIvdk063dX9avd1GDskjECSh083Ls3ePP1p43oVzvIO3VO9TSXXLIL29Wf4qHj0bZ9sNcwxEFG91/
  Jhs8xj6Vfc3i/1iwf6d5f0C9FCiN7eSGtYYR+02TzT8hbaWQRog/
  KQSmwXMNjh3bmtD7Xktu1vwpbNjmdc1kQu77gkA7apsKy4RwvM01riMdFYZRtzaPUw8gpnc4w== "rsa-key-20131104"
16
```

K. Check the permissions of the `authorized_keys` file. You might need to use the command

```
chmod 600 authorized_keys
```

to correct the permissions.



```
lanforge@jedtest:~/ssh
lanforge@jedtest ~/./ssh
> ls -l authorized_keys
-rw----- 1 lanforge lanforge 4079 Aug 25 15:52 authorized_keys
lanforge@jedtest ~/./ssh
>
```

L. The next time we load the *jedtest* PuTTY session we should not be prompted for our password.