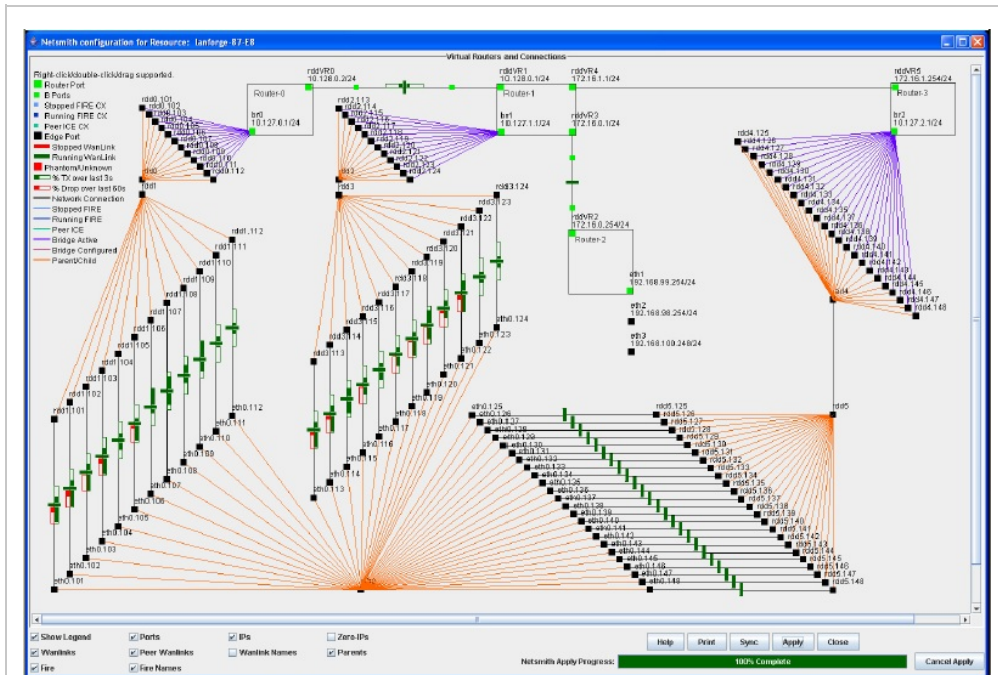


LANforge Screenshots

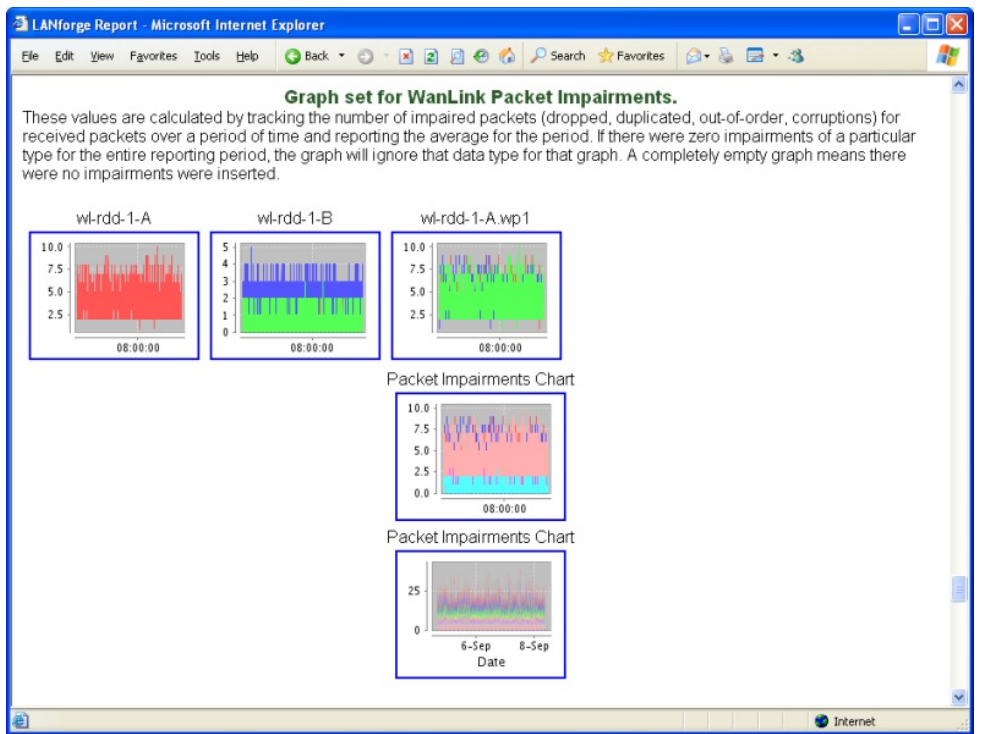
- [NetSmith & CT970-48](#)
- [LANforge Port Statistics](#)
- [LANforge-FIRE & ICE](#)
- [LANforge-GUI Images](#)
- [LANforge HTML Reports](#)

- For more information about NetSmith and the LANforge CT970-48, see the [LANforge Systems](#) page.



Click Image for Hi-Resolution Version. (Remember to expand image in new tab or browser.)

- For more information about LANforge-FIRE and LANforge-ICE, see the [LANforge Features](#) page.

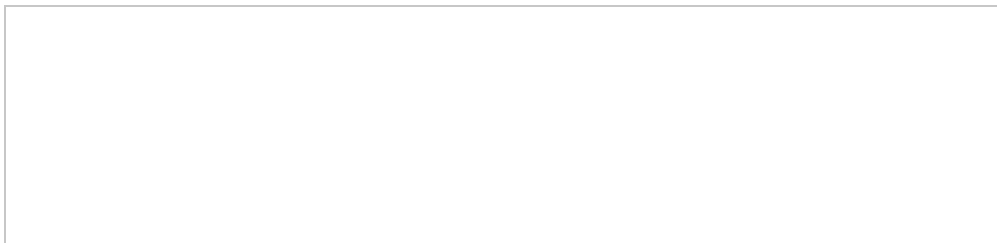


Click Image to View Sample HTML Report with Detailed Graphs.

- For more information about LANforge-FIRE and LANforge-ICE, see the LANforge [Features](#) page.

Click Image for Hi-Resolution Version. (Remember to expand image in new tab or browser.)

- For more information about LANforge-FIRE and LANforge-ICE, see the LANforge [Features](#) page.



The screenshot displays the LANforge Manager interface, version 3.8.2-beta2. The main window is titled 'WANLink Display: ezra-w3' and shows performance metrics for two WAN links: 'Endpoint ezra-w3-A' and 'Endpoint ezra-w3-B'.

Port Status Information:

- Current: LNk-UP 100bt-FD AUTO-NEGOTIATE-NEGOTIATE
- Supported: 10bt-HD 10bt-FD 100bt-HD 100bt-FD AUTO-NEGOTIATE
- Partner: 10bt-HD 10bt-FD 100bt-HD 100bt-FD Flow-Control
- Advertising: 10bt-HD 10bt-FD 100bt-HD 100bt-FD Flow-Control
- Driver Info: Driver: epro100@epro100.cs1.09j-1 9/29/99 Don

Port Configurables:

- IP Address: 0.0.0.0
- IP Mask: 0.0.0.0
- Default Gateway: 0.0.0.0
- MAC Address: 00:30:f7:03:c5:4a
- TX Q Len: 400
- MTU: 1500

WANLink Display: ezra-w3-A (Endpoint ezra-w3-A):

- WAN Speed: 30000000 bps TC: 29699237
- bps RC: 29885285 TX Pkts: 5294558
- Dropped: 0 Duplicated: 0
- Reordered: 0 TX Failed: 0

WANLink Display: ezra-w3-B (Endpoint ezra-w3-B):

- WAN Speed: 30000000 bps TC: 29867189
- bps RC: 29598180 TX Pkts: 5423859
- Dropped: 0 Duplicated: 0
- Reordered: 0 TX Failed: 0

WanPaths for Wanlink Endpoint: ezra-w3-A:

Name	Tx Rate	Source-Addr	Dest-Addr	Tx Pkts	Rx Pkts	Tx Bytes	Rx Bytes	Dropped	Dup Pkts
wp-11	512000	192.168.0.0/16	0.0.0.0/0	0	0	0	0	0	0

WanPaths for Wanlink Endpoint: ezra-w3-B:

Name	Tx Rate	Source-Addr	Dest-Addr	Tx Pkts	Rx Pkts	Tx Bytes	Rx Bytes	Dropped	Dup Pkts
wp-11	560000	192.168.0.0/16	0.0.0.0/0	0	0	0	0	0	0

Endpoint: top-ge-A (Port: demo2.yt.org):

- Card: demo2.yt.org
- Port: eth5
- IP: 172.2.2.7
- bps TC: 23630421
- PPS TC: 2653
- bps RC: 25484857
- PPS RC: 2765
- Errors: 315

The interface also includes various graphs for 'Rx Bytes Dropped', 'Rx Throughput', and 'Packets' over time, along with a table for 'Display Selected Paths' and a 'Packets' summary showing 197758 packets.

Click Image for Hi-Resolution Version. (Remember to expand image in new tab or browser.)