

## CT525-696-3ac-3n LANforge WiFIRE 802.11a/b/g/n/AC 6-radio WiFi Traffic Generator supporting 696 Virtual STA Interfaces

The CT525-696-3ac-3n wireless traffic generator is an excellent choice for testing Access Points and other WiFi networks. The CT525-696-3ac-3n uses a modified Wireless driver for WiFi NICs based on the Atheros chipset. The ath9k (a/b/g/n) chipset NICs can support up to 200 stations per radio. The ath10k (a/b/g/n/AC) chipset NICs can support up to 32 stations per radio. Each of the Virtual Stations has its own IP address, IP port space, MAC address and routing table. The Virtual Stations can be assigned to communicate to a particular Access Point, use a particular SSID, and Open or WPA/WPA2 authentication assigned. More advanced 802.1X authentication is also included. Each radio can be configured independently of the other. Transmit power and channel/frequency is configured on a per-radio basis. Most other settings are configurable per virtual station.

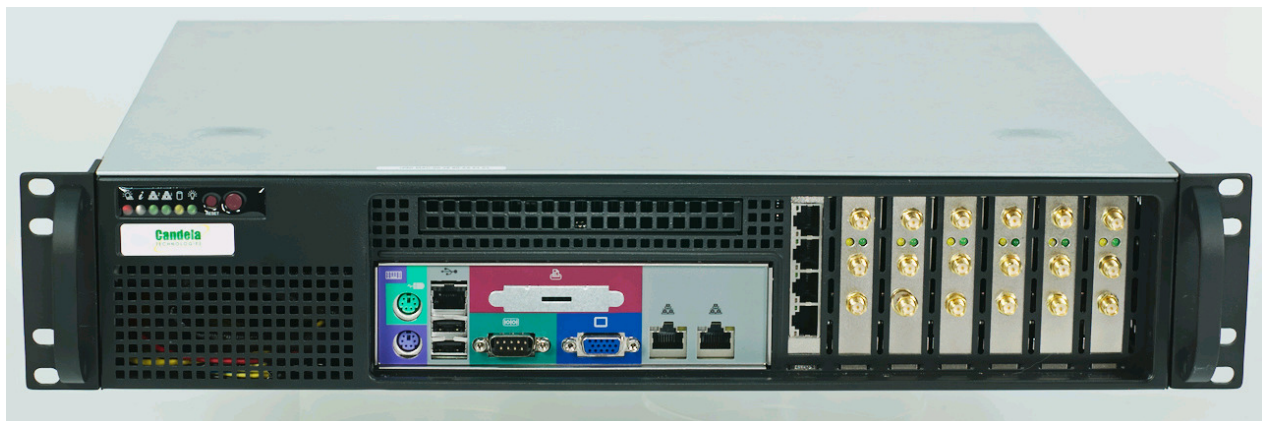
**There are three a/b/g/n/AC and three a/b/g/n WiFi radios per CT525-696-3ac-3n and multiple LANforge systems can be clustered together for even more realistic radio interference patterns and increased traffic generation capability.**

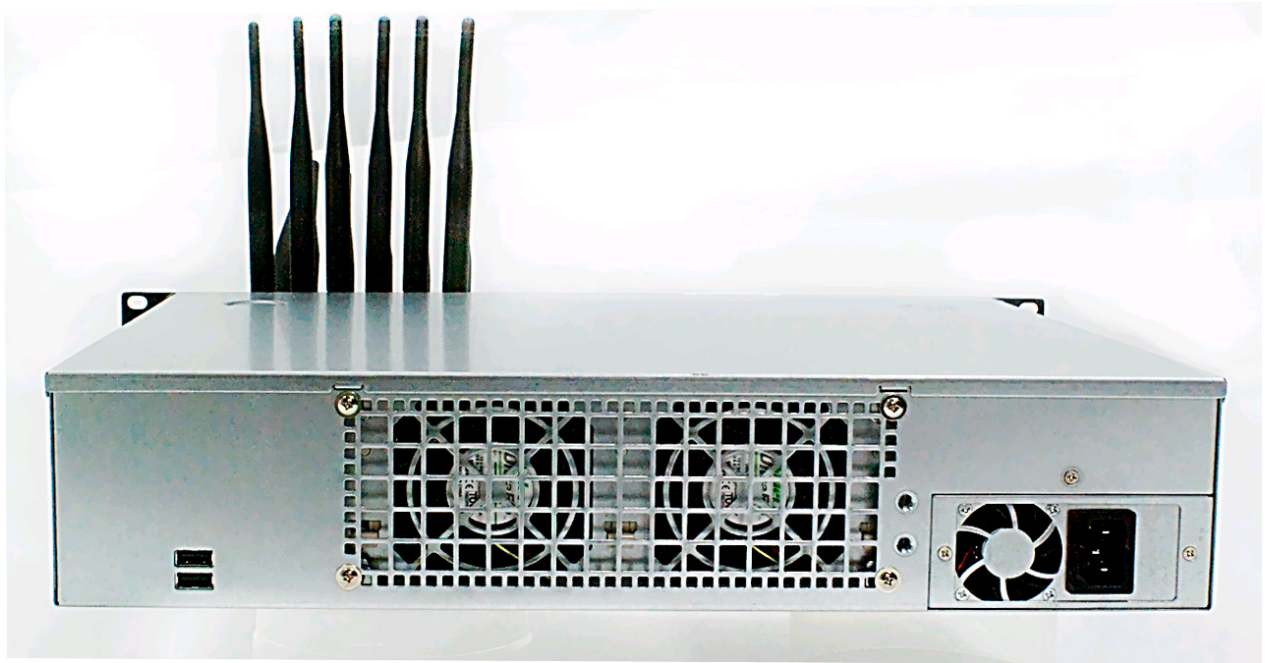
All virtual stations on the same radio must be on the same frequency, but as long as the protocol supports that frequency, the multiple protocols can be used concurrently. For instance, if the radio is configured for a 2.4Ghz channel, the stations can be b, g, n, or AC. If the radio is on a 5Ghz channel, the stations can be a, n or AC. The bandwidth can be configured for all protocols. For 802.11n, configuring the MCS rates also determines the number of streams (1x1, 2x2, 3x3 etc).

**NOTE: Ath10k 802.11ac radios and stations may be more limited in rate selection and other features for the initial release.**

The Virtual Stations may be configured with all of the virtual interfaces on the same subnet, or different subnets, depending on the testing requirements. When used with something like VoIP, it allows all of the VoIP calls to use the standard IP ports (with one call per virtual interface).

The CT525-696-3ac-3n is a 2U rackmount system. It has 18 antennas. It will fit into a standard rackmount cabinet. No additional hardware or software is required, but it is suggested that you manage the system using the LANforge-GUI on a separate machine. The CT525-696-3ac-3n can also be managed over a serial console in text mode or through directly connected monitor, mouse and keyboard.





NOTE: This product may have a different hardware configuration than the system pictured above.  
Refer to your official quote for details.

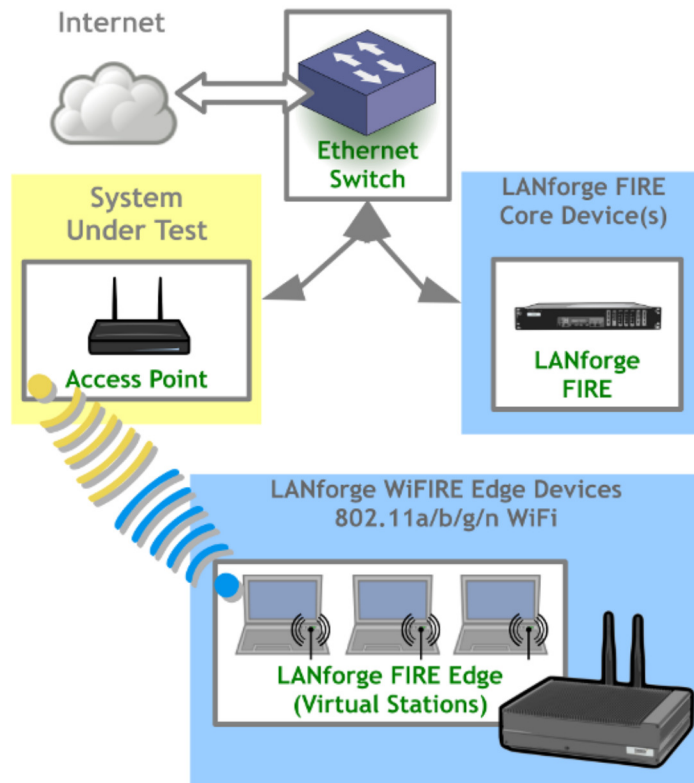
---

*Candela Technologies Inc., 2026 Main Street, Suite A, P.O. Box 3285, Ferndale, WA 98248, USA  
www.candelatech.com | sales@candelatech.com | +1 360 380 1618*

## Example Network Diagram



### LANforge WiFIRE Virtual Station Traffic Generator



LANforge WiFIRE supports 802.11 Virtual Stations and Access Points\*. To the System Under Test, it appears as if there are multiple PCs sitting inside the LANforge system generating independent traffic streams over Wireless NICs.

Many Virtual Station interfaces are supported per LANforge WiFIRE machine. LANforge can send traffic from one physical interface on the local machine to another interface on that same machine. Each physical and virtual interface can be configured on the same, or on different IP subnets.

In the configuration on the left, the LANforge FIRE Core can be one physical Ethernet interface and act as the server. The LANforge FIRE Edge can be the Virtual Station interfaces configured on the WiFi radio. Both interfaces can be on the same machine or multiple LANforge machines can be clustered together for increased traffic generation capacity.

\* All system support 802.11 a/b/g/n. Some systems support 802.11ac as well.

## Quick Start Guide

1. Connect Management Ethernet port to Management network or management PC. If connecting directly to a PC, an Ethernet cross-over cable should be used.
2. Connect eth1 wired Ethernet interface to wired Ethernet interface on the AP or network under test. This usually is considered the 'server' side of the network.
3. The Client side of the network will be the Virtual Stations configured on the CT525-696-3ac-3n WiFi NIC(s).
4. Connect power brick to standard US or European AC power source.
5. Install the LANforge-GUI on a separate management PC or Laptop. Windows and Linux GUIs are supported: Select the correct one from the CDROM or Candela Technologies Download page and install it. The CT525-696-3ac-3n appliance has a web server that also provides the LANforge GUIs.
6. The CT525-696-3ac-3n should now boot. If DHCP is enabled on the Management network, the CT525-696-3ac-3n will automatically acquire an IP address. If DHCP is not available, the IP address will be set to 192.168.1.101 by the LANforge scripts.
7. Start the LANforge-GUI on the management PC and click the 'Discover' button. It should find the CT525-696-3ac-3n appliance and add the IP address to the drop-down box in the Connect widget. Press 'Connect' and you will be connected to the CT525-696-3ac-3n.
8. Select the Port Mgr tab in the GUI. Double-click on the device called 'wiphy0'. This is the Radio device, and should be configured for the correct, channel, country-code, etc. Next, select one or more of the Virtual Station interfaces and click 'Modify'. Enter the correct IP address information, SSID and WEP or WPA/WPA2 key (if Enabled). After applying these changes, the Virtual Station interface should associate with the AP and be ready to send traffic. You may create up to 696 Virtual Station interfaces per CT525-696-3ac-3n with the 'Create' button.
9. Once the interfaces are configured correctly, you can click on the Layer 3, VOIP/RTP and other LANforge-FIRE related GUI tabs and configure/modify/start/stop particular traffic patterns that utilize the virtual stations and wired Ethernet interface. In most cases, you will want one of the FIRE endpoints to be on the wired interface and the other to be on the WiFi Virtual Station interface. It is also valid to generate traffic between two Virtual Station interfaces. The GUI Plugins menu (and right-click on some tables) provides some plugins to do automated testing and reporting. Contact support if you have suggestions for improvements.
10. Any GUI modifications take place immediately after you click 'Submit'.

---

*Candela Technologies Inc., 2026 Main Street, Suite A, P.O. Box 3285, Ferndale, WA 98248, USA  
www.candelatech.com | sales@candelatech.com | +1 360 380 1618*

# LANforge WiFIRE Related Shots

## Radio and Virtual Station Configuration Screen

sta1 (ath9k-119) Configure Settings

Port Status Information  
Current: LINK-UP GRO Authorized  
Driver Info: Port Type: WIFI-STA Parent: wiphy0

Port Configurables

Standard Configuration | **Advanced Configuration**

**Enable**

- Set IP Info
- Set IP6 Info
- Set IF Down
- Set MAC
- Set TX Q Len
- Set MTU
- Set Offload
- Set PROMISC

**Services**

- HTTP
- FTP

**Low Level**

- PROMISC
- TSO Enabled
- UFO Enabled
- GSO Enabled
- LRO Enabled
- GRO Enabled

**General Interface Settings**

- DHCP-IPv6  DHCP Release  Down  Aux-Mgt
- DHCP-IPv4 **Secondary-IPs** DHCP Client ID: None
- DNS Servers: 10.97.1.1 Peer IP: NA
- IP Address: 9.9.9.2 Global IPv6: AUTO
- IP Mask: 255.255.255.0 Link IPv6: AUTO
- Gateway IP: 0.0.0.0 IPv6 GW: AUTO
- Alias: MTU: 1500
- MAC Addr: 00:ab:cd:ef:01:02 TX Q Len: 1000
- Rpt Timer: medium (8 s) WiFi Bridge: NONE

**WiFi Settings**

- SSID: ben-138 AP: DEFAULT
- Key/Phrase: mypasswd Mode: 802.11abgn
- Freq/Channel: 5180/36 Rate: OS Default
- RTS: -1 Tx-Power: 17 dBm
- AMPDU-Factor: OS Default AMPDU-Density: OS Default
- Max-AMSDU: OS Default Bridge-IP: 0.0.0.0
- Use WPA  Use WPA2  Use WEP  Disable HT40  Disable SGI
- Scan Hidden  Allow Migration

Print | View Details | Probe | Display Scan | Sync | Apply | OK | Cancel

## Layer 3 (Ethernet, UDP, TCP) Connections

LANforge Manager Version(5.2.4)

Control Reporting Tear-Off Help

Rpt Timer: fast (1 s) 
 Test Manager: all

View: all

Cross Connects for Selected Test Manager

Name	Type	State	Pkt Tx A->B	Pkt Tx A<-B	Rate A->B	Rate A<-B	Rx Drop ...	Rx Drop ...	Drop Pkts A	Drop Pkts B	Latency	Rpt
sta-sta-t1	LF/TCP	Stopped	0	0	0	0	0	0	0	0	0	0
sta-sta-t2	LF/TCP	Stopped	0	0	0	0	0	0	0	0	0	0
sta-sta-u1	LF/UDP	Stopped	0	0	0	0	0	0	0	0	0	0
sta-udp-s	LF/UDP	Stopped	0	0	0	0	0	0	0	0	0	0
tcp-d-001	LF/TCP	Stopped	0	0	0	0	0	0	0	0	0	0
udp-0001	LF/UDP	Run	2,244	56	383,983	9,582	0	0	0	0	3	
udp-0002	LF/UDP	Run	2,244	56	383,988	9,582	0	0.045	0	1	5	
udp-0003	LF/UDP	Run	2,244	56	383,988	9,582	0	0.045	0	1	8	
udp-0004	LF/UDP	Run	2,244	56	383,988	9,582	0	0.045	0	1	10	
udp-0005	LF/UDP	Stopped	0	0	0	0	0	0	0	0	0	
udp-0006	LF/UDP	Stopped	0	0	0	0	0	0	0	0	0	
udp-0007	LF/UDP	Stopped	0	0	0	0	0	0	0	0	0	
udp-0008	LF/UDP	Stopped	0	0	0	0	0	0	0	0	0	

Logged in to: 192.168.100.195:4002 as: Admin

## Layer 3 Create/Modify Screen

udp-se - Create/Modify Cross Connect

**1** Cross-Connect

CX Name: udp-se

CX Type: LANforge / UDP

Resource:	TX Endpoint	RX Endpoint
1 (ec2010-ath9k-1)	1 (ec2010-ath9k-1)	3 (ct520-6157)
Port:	28 (vap0)	8 (wlan0)
Min Tx Rate:	New Modem ( 56 Kbps )	0C12 ( 622.08 Mbps )
Max Tx Rate:	Same	Same
Min PDU Size:	UDP P1d (1,472 B)	24000 (24,000 B)
Max PDU Size:	Same	Same
IP ToS:	Best Effort (0)	Best Effort (0)
Pkts To Send:	Infinite	Infinite

**2** Cross-Connect

Report Timer: fast (1 s)

TX Endpoint	RX Endpoint
Increasing	Increasing
Min IP Port: AUTO	Min IP Port: AUTO
Max IP Port: Same	Max IP Port: Same
Min Duration: Forever	Min Duration: Forever
Max Duration: Same	Max Duration: Same
Min Reconn: 0 (0 ms)	Min Reconn: 0 (0 ms)
Max Reconn: Same	Max Reconn: Same
Multi-Conn: Normal (0)	Multi-Conn: Normal (0)

**3** Cross-Connect

Test Manager: default\_tm

Quiesce: 3

TX Endpoint	RX Endpoint
AUTO	AUTO
<input type="checkbox"/> Replay File	<input type="checkbox"/> Replay File
<input type="checkbox"/> Loop	<input type="checkbox"/> Loop
Filename:	
Dest MAC: 00 0e 8e 32 12 cf	80 01 02 03 04 05

**4** Cross-Connect

Snd Buff Size: 0S Default

Rcv Buff Size: 0S Default

Send Bad FCS: zero (0%)

Src MAC: 80:01:02:03:04:05

Proxy Addr: 0.0.0.0

Proxy Port: 0

Socket Priority: 0

**5** Cross-Connect

TX Endpoint	RX Endpoint
Delayed ACK Settings	Delayed ACK Settings
Min: 0 (0 ms)	Min: 0 (0 ms)
Max: 0 (0 ms)	Max: 0 (0 ms)
Max Segments: 0 (0)	Max Segments: 0 (0)

**6** Cross-Connect

TX Endpoint	RX Endpoint
<input type="checkbox"/> Checksum	<input type="checkbox"/> Checksum
<input type="checkbox"/> UnManaged	<input type="checkbox"/> UnManaged
<input checked="" type="checkbox"/> Duration Quiesce	<input checked="" type="checkbox"/> Duration Quiesce
<input type="checkbox"/> Quiesce-After-Range	<input type="checkbox"/> Quiesce-After-Range
<input type="checkbox"/> TCP_NODELAY	<input type="checkbox"/> TCP_NODELAY
<input type="checkbox"/> Clear-Port-On-Start	<input type="checkbox"/> Clear-Port-On-Start
<input type="checkbox"/> Linear-IP-Ports	<input type="checkbox"/> Linear-IP-Ports

Conn Timeout:	10s (10 s)	10s (10 s)	Endp Name:	udp-se-A	udp-se-B
TCP MSS:	0s Default	0s Default			

---

Candela Technologies Inc., 2026 Main Street, Suite A, P.O. Box 3285, Ferndale, WA 98248, USA  
www.candelatech.com | sales@candelatech.com | +1 360 380 1618



## Software Features

- Supports real-world protocols:
  - Layer 2: Raw-Ethernet.
  - 802.1Q VLANs.
  - PPPoE: Integrated PPPoE support.
  - Layer 3: IPv4, IPv6, UDP/IP, IGMP Multicast UDP, TCP/IP.
  - Layer 4: FTP, HTTP, HTTPS, TFTP, SFTP, SCP
  - 802.11a/b/g/n Wireless Station (up to 600 per machine).
  - 802.11a/b/g/n/AC Wireless Station (up to 96 per machine).
  - Layer 4: TELNET, PING, DNS, SMTP, NMAP (via add-on script).
  - File-IO: NFSv3, NFSv4, CIFS, iSCSI.
- Supports up to 1000 concurrent TCP connections with base license package.
- The CT525-696-3ac-3n is able to push up to 345Mbps through an AP, depending on the protocols mix, wireless mode and environment, and speed of the network under test. Supports at least 60 VoIP (SIP, RTP) calls if appropriate licenses are purchased. When all three a/b/g/n/AC and three a/b/g/n radios are configured on different channels, combined maximum upload speed exceeds 625Mbps (**NOTE: Tested with 802.11a/b/g/n NICs. The a/b/g/n/AC chipset NICs have not been performance tested yet.**)
- Supports real-world compliance with ARP protocol.
- Supports ToS (QoS) settings for TCP/IP and UDP/IP connections.
- Uses publicly available Linux and Windows network stacks for increased standards compliance.
- Utilizes [libcurl](#) for FTP, HTTP and HTTPS (SSL), TFTP and SCP protocols.
- Supports file system test endpoints (NFS, CIFS, and iSCSI file systems, too!). File system mounts can use the virtual interface feature for advanced testing of file server applications.
- Supports custom command-line programs, such as telnet, SMTP, and ping.
- Comprehensive traffic reports include: Packet Transmit Rate, Packet Receive Rate, Packet Drop %, Transmit Bytes, Receive Bytes, Latency, Jitter, various Ethernet driver level counters, and much more.
- Supports generation of reports that are ready to be imported into your favorite spreadsheet.
- Allows packet sniffing and network protocol decoding with the integrated [Wireshark](#) protocol sniffer.
- GUI runs as Java application on Linux, Solaris and Microsoft Operating Systems (among others).
- GUI can run remotely, even over low-bandwidth links to accommodate the needs of the users.
- Central management application can manage multiple units, tests, and testers simultaneously.
- Includes easy built-in scripting for iterating through rates and packet sizes, with automated reporting. Also supports scriptable command line interface (telnet) which can be used to automate test scenarios. Perl libraries and example scripts are provided!
- Automatic discovery of LANforge data generators simplifies configuration of LANforge test equipment.
- LANforge traffic generation/management software is supported on Linux, Solaris and MS Windows.

---

*Candela Technologies Inc., 2026 Main Street, Suite A, P.O. Box 3285, Ferndale, WA 98248, USA*  
*www.candelatech.com | sales@candelatech.com | +1 360 380 1618*

## Hardware Specification

- High-End Intel Multi-Core 2U rackmount server.
- Operating System: Fedora Linux with customized Linux kernel.
- Up to 28 10/100/1000 Ethernet ports on PCIe bus. Additional interface for management.
- High-availability Ethernet hardware bypass option available.
- Quad-Core Intel processor.
- 7 PCIe low profile slots.
- Optional NICs include: 4-port 10/100/1000 copper, 2-port 10/100/1000 copper, 2-port 1Gbps fibre, 2-port 10Gbps fibre, 2-port 10Gbps copper (CX4).
- 8 GB or more RAM.
- 200 GB or larger Hard Drive.
- Solid State Drive option available.
- Weight: 45 lbs or 20.4 kg.
- Dimensions: 17 x 18 x 3 inches (18-inch deep standard 2U rackmount server) Metric: 432 x 457 x 76 mm.
- Estimated Power Usage: 2.1Amps @ 120VAC under load, 1.4Amps idle.
- ROHS compliant.
- Three Atheros/Qualcomm 802.11a/b/g/n/AC and three a/b/g/n 3x3 MIMO NICs with three external antenna each. Supports up to 696 virtual stations (200 per a/b/g/n radio and 32 per a/b/g/n/AC radio).
- Antenna-to-Radio association: See labels on chassis.

List Price: \$55,730    List Price with 1 Year support: \$65,204

---

## Additional Feature Upgrades

Unless otherwise noted in the product description, these features usually cost extra:

- WanPaths (LANforge-ICE feature set)
- Virtual Interfaces: MAC-VLANs, 802.1Q VLANs, WiFi stations, etc
- FIRE Connections: Base FIRE license includes 1000 active connections.
- **WiFi RF Attenuator**: Adjust WiFi signal strength in a controllable manner.
- **SMA RF Cable Bundle**: Used to cable LANforge WiFIRE radios to device-under-test.
- LANforge-ICE Network Emulation.
- VOIP: Each concurrent call over the included package requires a license.
- Armageddon: Each pair of ports requires a license if not already included.

---

*Candela Technologies Inc., 2026 Main Street, Suite A, P.O. Box 3285, Ferndale, WA 98248, USA*  
*www.candelatech.com | sales@candelatech.com | +1 360 380 1618*

Last modified: Fri Feb 21 09:34:09 PST 2014